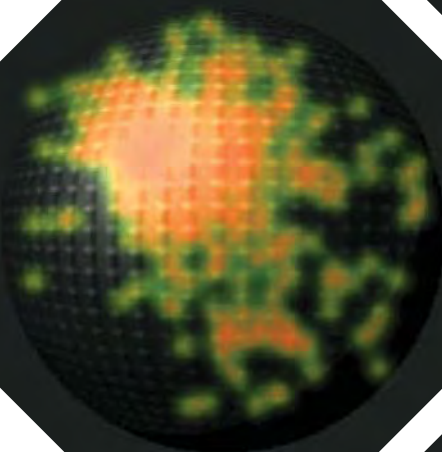
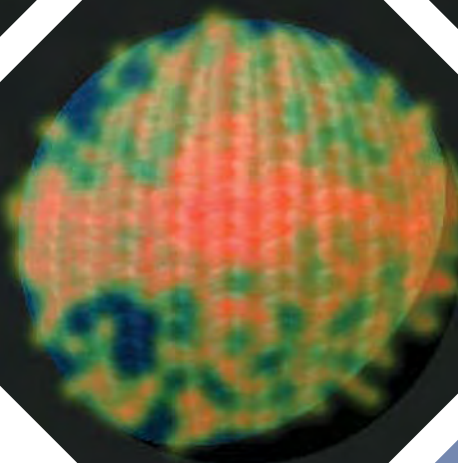
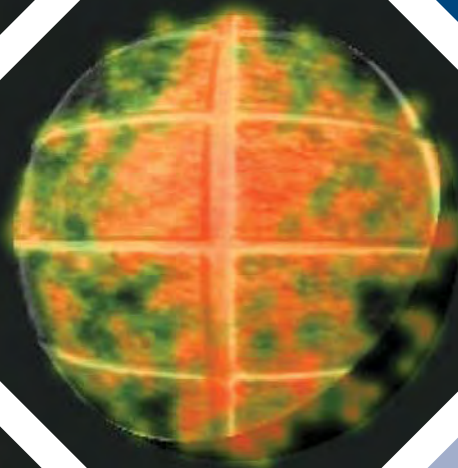
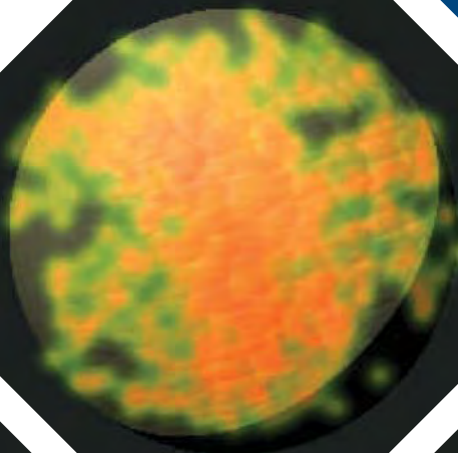


2009  
Volume 6, Number 3

# ACM Transactions on Applied Perception



Association for  
Computing Machinery

*Advancing Computing as a Science & Profession*

ACM Transactions on Applied Perception

2009 • Vol. 6 • No. 3

Articles 13-20

## **SPECIAL ISSUE APGV 2008**

- Article 13**    **S. H. Creem-Regehr**    Guest Editorial  
(2 pages)    **K. Myszkowski**
- Article 14**    **R. McDonnell**    Investigating the Role of Body Shape on the Perception  
(11 pages)    **S. Jörg**    of Emotion  
                  **J. McHugh**  
                  **F. N. Newell**  
                  **C. O'Sullivan**
- Article 15**    **P. S. A. Reitsma**    Effect of Scenario on Perceptual Sensitivity to Errors  
(16 pages)    **C. O'Sullivan**    in Animation
- Article 16**    **S. M. Munn**    FixTag: An Algorithm for Identifying and Tagging Fixations to  
(25 pages)    **J. B. Pelz**    Simplify the Analysis of Data Collected by Portable Eye Trackers
- Article 17**    **A. McNamara**    Search Task Performance Using Subtle Gaze Direction with  
(19 pages)    **R. Bailey**    the Presence of Distractions  
                  **C. Grimm**
- Article 18**    **J. Filip**    On Uniform Resampling and Gaze Analysis of Bidirectional  
(15 pages)    **M. J. Chantler**    Texture Functions  
                  **M. Haindl**
- Article 19**    **S. A. Kuhl**    HMD Calibration and Its Effects on Distance Judgments  
(20 pages)    **W. B. Thompson**  
                  **S. H. Creem-Regehr**
- Article 20**    **B. E. Riecke**    Auditory Self-Motion Simulation is Facilitated by Haptic and  
(22 pages)    **D. Feuereissen**    Vibrational Cues Suggesting the Possibility of Actual Motion  
                  **J. J. Rieser**

# ACM Transactions on Applied Perception

ACM  
2 Penn Plaza, Suite 701  
New York, NY 10121-0701  
Tel.: (212) 869-7440  
Fax: (212) 869-0481

Home Page: <http://www.acm.org/pubs/tap>

## Editors in Chief

Roland Fleming  
Carol O'Sullivan

Max Planck Institute for Biological Cybernetics / Tübingen, Germany / email: roland.fleming@tuebingen.mpg.de  
Computer Science Department / Trinity College Dublin / Dublin 2, Ireland / email: carol.osullivan@cs.tcd.ie

## Associate Editors

Andrew Beall  
Alan Chalmers  
Perry Cook  
Ramani Duraiswami  
Marc Ernst  
James Elder  
James Ferwerda  
Yves Guiard

Department of Psychology / University of California / Santa Barbara, CA 93106 / email: beall@psych.ucsb.edu  
Department of Computer Science / University of Bristol / Bristol BS81UB, UK / email: alan.chalmers@bristol.ac.uk  
Department of Computer Science / Princeton University / Princeton, NJ 08544-2087 / email: prc@cs.princeton.edu  
Institute of Advanced Computer Studies / University of Maryland / College Park, MD 20742 / email: ramani@umiacs.umd.edu  
Max Planck Institute for Biological Cybernetics / Tübingen, Germany / email: marc.ernst@tuebingen.mpg.de  
Centre for Vision Research / York University / Toronto, Ontario M3J 1P3, Canada / email: jelder@yorku.ca  
Program of Computer Graphics / Cornell University / Ithaca, NY 14853 / email: jaf@graphics.cornell.edu  
Mouvement et Perception / CNRS & Université de la Méditerranée / Faculté des Sciences du Sport Université de la Méditerranée / 13288 Marseille Cedex 9, France / email: guiard@laps.univ-mrs.fr

Matthias Harders

Medical Image Analysis and Visualization Group / Computer Vision Laboratory / ETH Zürich / CH-8092 Zürich, Switzerland / email: mharders@vision.ee.ethz.ch

Vincent Hayward

Centre for Intelligent Machines / McGill University / Montréal, Québec H3A 2A7, Canada / email: hayward@cim.mcgill.ca

Christopher Healey

Department of Computer Science / North Carolina State University / Raleigh, NC / email: healey@csc.ncsu.edu

Ken Hinckley

Microsoft Corporation / Redmond, WA 98052-6399 / email: kenh@microsoft.com

Victoria Interrante

Department of Computer Science and Engineering / University of Minnesota / Minneapolis, MN 55455 / email: interrante@cs.umn.edu

Dan Kersten

Computational Vision Lab / Minneapolis, MN 55455 / email: kersten@umn.edu

Roberta Klatzky

Department of Psychology / Carnegie Mellon University / Pittsburgh, Pennsylvania 15213 / email: klatzky@cmu.edu

Michael Langer

School of Computer Science / Center for Intelligent Machines / McGill University / Montreal H3A2P7, Canada / email: langer@cs.mcgill.ca

Anatole Lécuyer

INRIA-Projet BUNRAKU / Campus Universitaire de Beaulieu / F-35042 Rennes Cedex, France / email: anatole.lecuyer@irisa.fr

Katarina Mania

Department of Electronic and Computer Engineering / Technical University of Crete / 73100 Chania / email: k.mania@ced.tuc.gr

Gary Meyer

Department of Computer Science and Engineering / University of Minnesota / Minneapolis, MN 55455 / email: meyer@cs.umn.edu

Karol Myszkowski

Max-Planck-Institut für Informatik / 66123 Saarbrücken, Germany / email: karol@mpi-sb.mpg.de

Dinesh Pai

Division of Computer and Information Sciences / Rutgers, the State University of New Jersey / Piscataway, NJ 08854-8019 / email: dpai@cs.rutgers.edu

Penny Rheingans

Computer Science and Electrical Engineering Department / University of Maryland Baltimore County / Baltimore, MD 21250 / email: rheingan@cs.umbc.edu

Ruth Rosenholtz

Department of Brain and Cognitive Sciences / Massachusetts Institute of Technology / Cambridge, MA 02139-4307 / email: rroth@mit.edu

Holly Rushmeier

Department of Computer Science / Yale University / New Haven, CT 06520-8285 / email: holly@acm.org

Pawan Sinha

MIT Artificial Intelligence Laboratory / Cambridge, MA 02139 / email: sinha@ai.mit.edu

Veronica Sundstedt

Department of Computer Science / University of Bristol / Bristol BS8 1UB, UK / email: veronica@cs.bris.ac.uk

Hong Tan

Electrical Engineering Building / Purdue University / West Lafayette, IN 47907-2035 / email: hongtan@purdue.edu

William B. Thompson

School of Computing / University of Utah / Salt Lake City, UT 84112-9205 / email: thompson@cs.utah.edu

Tom Troscianko

Department of Experimental Psychology / University of Bristol / Bristol, BS8 1TN, UK / email: tom.troscianko@bristol.ac.uk

Colin Ware

Data Visualization Research Lab / Center for Coastal and Ocean Mapping / University of New Hampshire / Durham, NH 03824 / email: colinw@cisunix.unh.edu

Benjamin Watson

Department of Computer Science / North Carolina State University / EBII, 890 Oval Drive, Box 8206 / Raleigh, NC 27695-8206 / email: bwatson@ncsu.edu

Pavel Zahorik

Department of Psychology / University of Louisville / Louisville KY 40292 / email: pavel.zahorik@louisville.edu

## Headquarters Journals Staff

Jono Hardjowirogo

Publisher, Associate Director of Publications

Irma Strolia

Editorial Assistant

Media Content Marketing

Production

The ACM Transactions on Applied Perception (ISSN: 1544-3558) is published quarterly in Spring, Summer, Fall, and Winter by the Association for Computing Machinery (ACM), 2 Penn Plaza, Ste. 701, New York, NY 10121-0701. Periodicals class postage paid at New York, NY 10001, and at additional mailing offices. Printed in the U.S.A. POSTMASTER: Send address changes to ACM Transactions on Applied Perception, ACM, 2 Penn Plaza, Ste. 701, New York, NY 10121-0701.

Copyright © 2009 by the Association for Computing Machinery (ACM). Permission to make digital or hard copies of part or all of this work for personal or classroom use is granted without fee provided that copies are not made or distributed for profit or commercial advantage and that copies bear this notice and the full citation on the first page. Copyrights for components of this work owned by others than ACM must be honored. Abstracting with credit is permitted. To copy otherwise, to republish, to post on servers, or to redistribute to lists, requires prior specific permission and/or a fee. Request permission to republish from: Publications Department, ACM, Inc. Fax +1 212-869-0481 or email [permissions@acm.org](mailto:permissions@acm.org).



Association for  
Computing Machinery

Advancing Computing as a Science & Profession

For other copying of articles that carry a code at the bottom of the first or last page or screen display, copying is permitted provided that the per-copy fee indicated in the code is paid through the Copyright Clearance Center, 222 Rosewood Drive, Danvers, MA 01923.

Cover images from "On Uniform Resampling and Gaze Analysis of Bidirectional Texture Functions," by J. Filip, M. J. Chantler, and M. Haindl, in this issue.

## ACM Transactions on Applied Perception

<http://www.acm.org/pubs/tap>

### Guide to Manuscript Submission

Submission to the *ACM Transactions on Applied Perception* is done electronically through <http://acm.manuscriptcentral.com>. Once you are at that site, you can create an account and password with which you can enter the ACM Manuscript Central manuscript review tracking system. From a drop-down list of journals, choose *ACM Transactions on Applied Perception* and proceed to the Author Center to submit your manuscript and your accompanying files.

You will be asked to create an abstract that will be used throughout the system as a synopsis of your paper. You will also be asked to classify your submission using the ACM Computing Classification System through a link provided at the Author Center. For completeness, please select at least one primary-level classification followed by two secondary-level classifications. To make the process easier, you may cut and paste from the list. Remember, you, the author, know best which area and sub-areas are covered by your paper; in addition to clarifying the area where your paper belongs, classification often helps in quickly identifying suitable reviewers for your paper. So it is important that you provide as thorough a classification of your paper as possible.

The ACM Production Department prefers that your manuscript be prepared in either LaTeX or Ms Word format. Style files for manuscript preparation can be obtained at the following location: <http://www.acm.org/pubs/submissions/submission.htm>. For editorial review, the manuscript should be submitted as a PDF or Postscript file. Accompanying material can be in any number of text or image formats, as well as software/documentation bundles in zip or tar-gzipped formats.

Questions regarding editorial review process should be directed to the Editor-in-Chief. Questions regarding the post-acceptance production process should be addressed to the Publisher, Jono Hardjowirogo, at [jono@hq.acm.org](mailto:jono@hq.acm.org).

### Subscription, Single Copy, and Membership Information.

Send orders to:

ACM  
P.O. Box 12114  
Church Street Station  
New York, NY 10257

For information, contact:

**Mail:** ACM Member Services Dept.  
2 Penn Plaza, Suite 701  
York, NY 10121-0701  
**Phone:** +1-212-626-0500  
**Fax:** +1-212-944-1318  
**Email:** [acmhelp@acm.org](mailto:acmhelp@acm.org)  
**Catalog:** <http://www.acm.org/catalog>

Subscription rates for *ACM Transactions on Applied Perception* are \$ 38 per year for ACM members, \$33 for students, and \$159 for nonmembers. Single copies are \$18 each for ACM members and \$40 for nonmembers. Your subscription expiration date is coded in four digits at the top of your mailing label; the first two digits show the year, the last two show the month of expiration.

**Notice to Past Authors of ACM-Published Articles.** ACM intends to create a complete electronic archive of all articles and/or other materials previously published by ACM. If you have written a work that was previously published by ACM in any journal or conference proceedings prior to 1978, or any SIG Newsletter at any time, and you do NOT want this work to appear in the ACM Digital Library, please inform [permission@acm.org](mailto:permission@acm.org), stating the title of the work, the author(s), and where and when published.

**About ACM.** ACM is the world's largest educational and scientific computing society, uniting educators, researchers and professionals to inspire dialogue, share resources and address the field's challenges. ACM strengthens the computing profession's collective voice through strong leadership, promotion of the highest standards, and recognition of technical excellence. ACM supports the professional growth of its members by providing opportunities for life-long learning, career development, and professional networking.

**Visit ACM's Website:** <http://www.acm.org>.

**Change of Address Notification.** To notify ACM of a change of address, use the addresses above or send an email to [coa@acm.org](mailto:coa@acm.org).

Please allow 6-8 weeks for new membership or change of name and address to become effective. Send your old label with your new address notification. To avoid interruption of service, notify your local post office before change of residence. For a fee, the post office will forward 2nd- and 3rd-class periodicals.